

Case 12-2. Early Damage in Visual Field With Corresponding Defects Shown by SD-OCT Devices

Clinical Summary

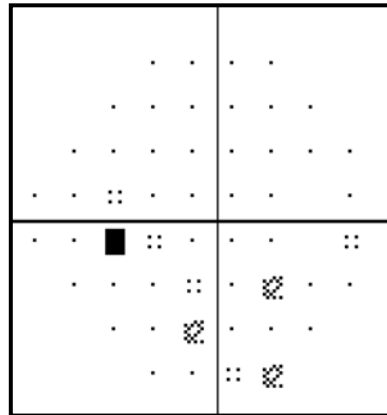
This case presents the right eye of a 70-year-old female with primary open-angle glaucoma in both eyes being treated with travoprost. Ocular examination reveals a best-corrected visual acuity of 20/16, IOP of 10 mm Hg, and central corneal thickness of 506 μm . The anterior segment examination shows

a moderate nuclear sclerotic cataract. The dilated fundus exam reveals a thin rim with a cup-to-disc ratio of 0.7 (A). Visual field testing reveals an early inferior arcuate scotoma (B). HRT imaging (C) shows abnormalities over the entire rim area.

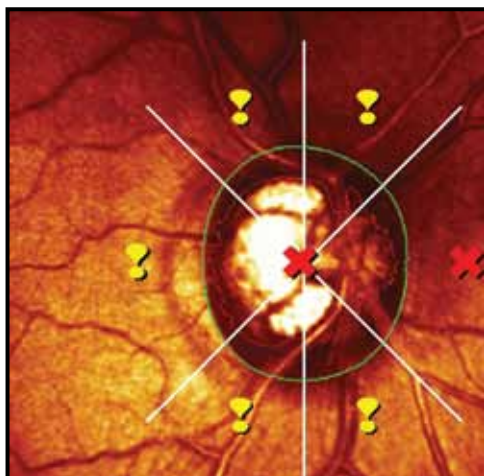
The Table shows that the mean RNFL thicknesses for Stratus TD-OCT, Cirrus HD-OCT, and RTVue-100 all are in the normal range.



A. Disc photo.



B. Visual field pattern deviation, mean deviation = -1.01 dB.



C. HRT MRA.

RNFL Thickness Measurements

Device	RNFL Thickness (μm)
Stratus TD-OCT	81
Cirrus HD-OCT	83
RTVue-100	94