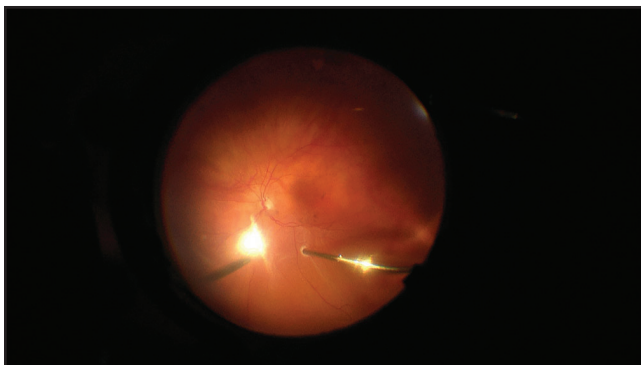


**Figure 3-5.** Opening a drainage retinotomy: Gently approach the cauterized area of the retina with the flute. Open up the passive aspiration by taking your finger off the valve. This will pop the cauterized retina off of the retinotomy so you can drain.



**Figure 3-6.** Fluid-air exchange and drainage of SRF through the drainage retinotomy.

drain some of the vitreous cavity fluid out first. Then you can slowly approach the retinotomy site and drain the fluid without going through the retinotomy. This method will keep the retina from popping up into your flute. Once the retina is flat and the eye is full of air, it's time to laser.