

Figure 55-1. CT scan of pelvis that demonstrates diffuse lymphadenopathy.

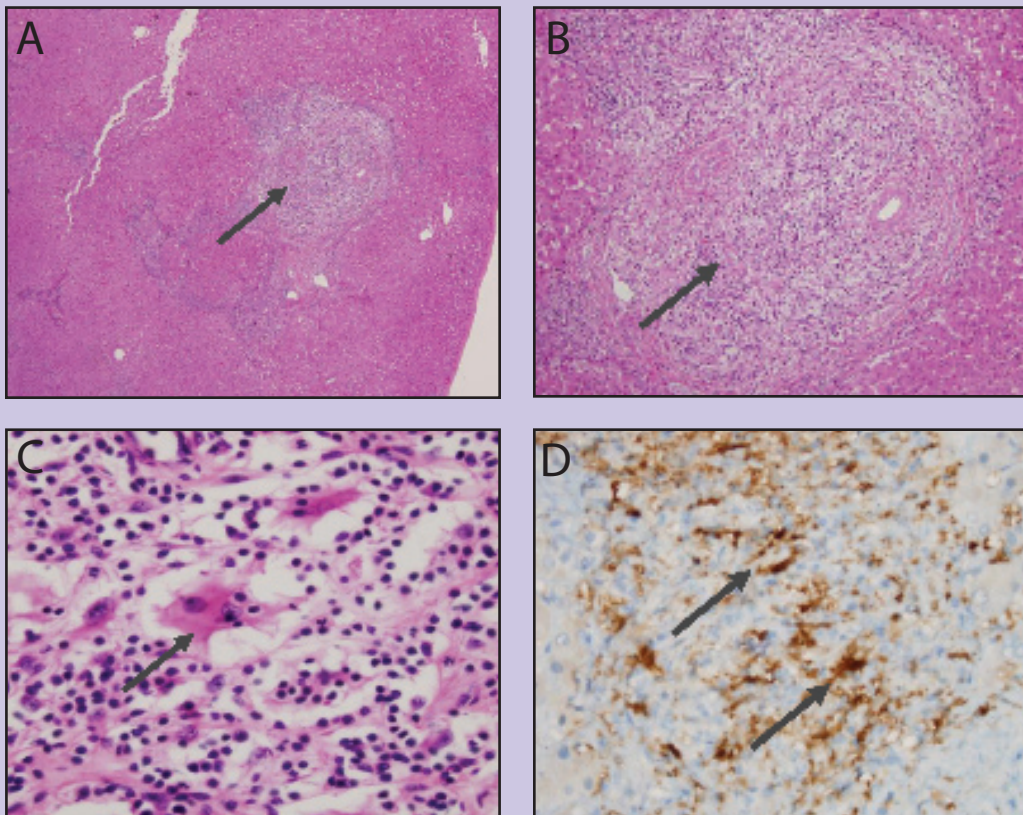


Figure 55-2. (A) Low-power magnification ($\times 16$, original magnification) of liver biopsy showing a nodular infiltrate in the portal tracts. (B) Higher power ($\times 100$) of liver biopsy showing the infiltrate is rich in histiocytes. (C) Liver biopsy where avid phagocytosis of lymphocytes is found ($\times 160$). (D) An immunostain for S-100 was positive, as is typical of Rosai-Dorfman disease ($\times 100$).