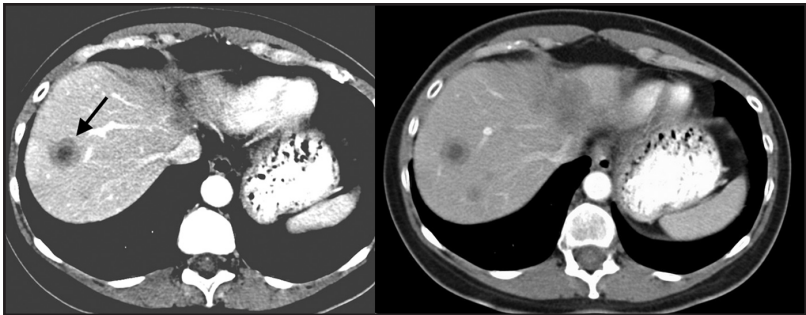
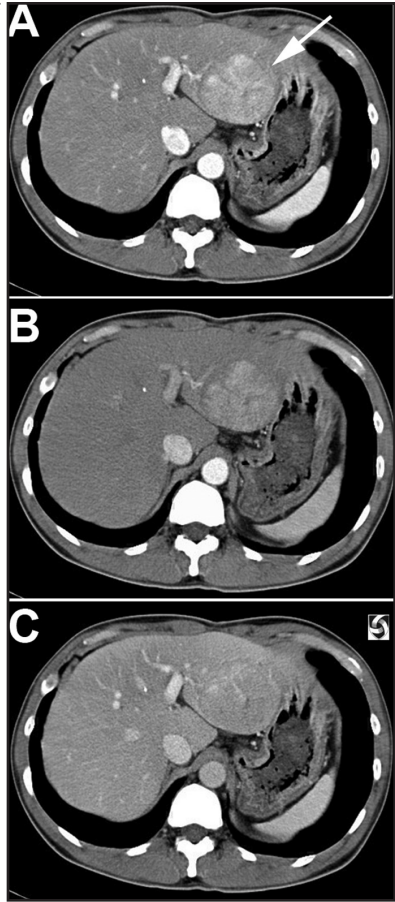


**Figure 1-2.** Computed tomography of hepatocellular carcinoma. Three contrast-enhanced images from a computed tomography (CT) study are shown. Image A represents the early arterial phase. A heterogeneously enhancing mass (arrow), approximately 4-5 cm in size, is visible in the liver. There is no evidence of calcifications. Image B shows the late-arterial phase image, which demonstrates additional enhancement of the mass. On the portal venous phase image in Image C, the enhancement has decreased. The mass is iso-attenuating with the rest of the liver.



**Figure 1-3.** Computed tomography of liver metastasis. The image on the left shows the arterial phase, which demonstrates a liver lesion (arrow) in a patient with colon cancer. The lesion is hypointense, reflecting the hypovasculature of the lesion. The image on the right shows the lesion on the venous contrast phase.