

Figure 2-6. A screen is reflected in the front surface mirror.

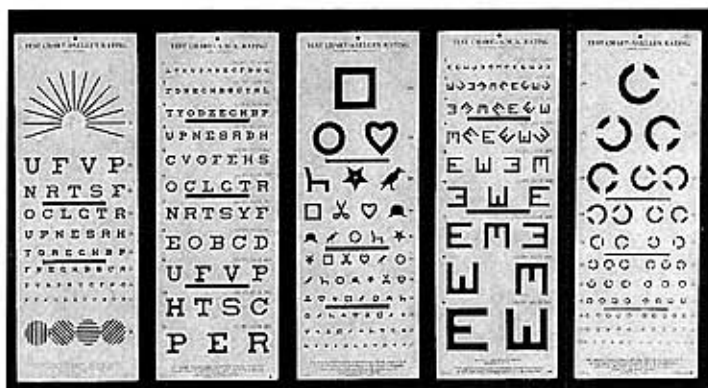


Figure 2-7. Distance visual acuity charts. (Reprinted from Herrin MP. *Ophthalmic Examination and Basic Skills*. Thorofare, NJ: SLACK Incorporated; 1990.)

Maintenance

Charts printed on plastic surfaces can easily be washed with a mild soap solution. Cardboard charts that are not laminated will soil easily when touched. Oils and dirt from fingers can ruin the charts.

Brightness Acuity Tester (BAT)

Description and Purpose

The Brightness Acuity Tester (Figure 2-8) provides objective measurements of functional visual acuity in different light conditions. Cataracts can scatter light, causing glare and impaired visual function in bright light conditions. The BAT simulates bright overhead sunlight, indirect sunlight, and bright overhead fluorescent lighting.

Maintenance

The BAT is a hand-held instrument that has a white hemispherical reflector which can become soiled or scratched. The reflector can be removed for cleaning by taking out the retaining screw below the reflector on the front of the instrument. The reflector will then slide down