

ERRATUM

Figures 29-9, 29-10, and 29-11 were printed incorrectly in the book. Below are the correct images.



FIGURE 29-9. Preparation of a medial meniscus transplant. Some of the medial tibial spine can be removed with a high-speed burr to facilitate visualization and passage of the allograft.



FIGURE 29-10. Final preparation of the medial meniscus bone plugs. These are generally 8 mm in diameter and about 8 to 10 mm in depth. High-strength sutures are placed both in the bone plugs as well as in the medial meniscus horn attachment.

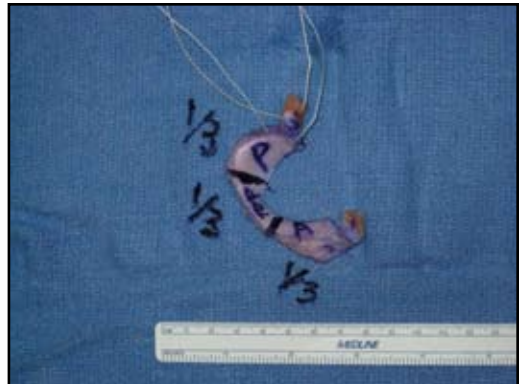


FIGURE 29-11. High-strength sutures are placed both in the bone plugs as well as in the medial meniscus horn attachment. Markings on the medial meniscus ensure anatomic placement into the joint. The key marking is placed at the junction of the middle and posterior horns, which is where the reduction stitch is placed to facilitate transfer of the meniscus into the joint.

Provencher MT, Lanzi J, Rose M, Solomon DJ. Management of combined meniscal and ACL insufficiency after reconstruction: the role of meniscal transplant. In: Bach BR Jr, Provencher MT, eds. *ACL Surgery: How to Get it Right the First Time and What to Do if it Fails*. Thorofare, NJ: SLACK Incorporated; 2010:297-310.